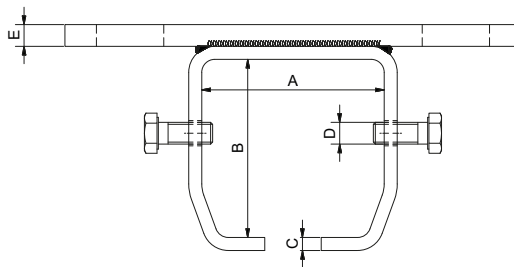




Materiale: Acciaio Zincato



Ceiling galvanized steel support bracket for guide

Support au plafond pour rail en acier zingué

Soporte de techo para guía en acero cincado

Потолочный кронштейн

Deckenstütze für Stahlprofil aus verzinktem Stahl



Art.	A	B	C	D	Piastra	E	Asole	Peso/Kg	Conf.
-					Plate		Slots	Weight(Kg)	Pack
840/1	71	65	5	M8	90x170	8	17x28	1.69	8
840/2	86	82	6	M10	100x210	10	21x31	3.02	6
840/3	94,5	113	10	M12	100x225	10	21x31	5.19	4