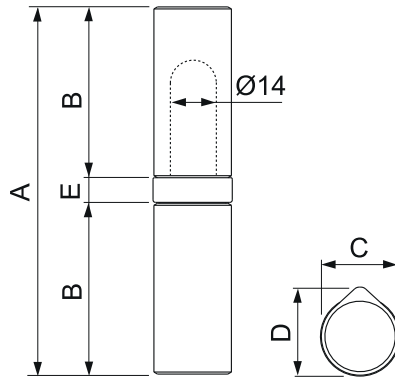









Profilo trafilato 22 x 25mm



Materiale: Acciaio grezzo



-  Turned hinge with brass or iron pin and bearing
-  Paumelle façonnée au tour avec pivot en laiton pu fer et roulement
-  Charnela torneada con pernio de latón o hierro y cojinete
-  Петля с латунным (стальным) штифтом и подшипником
-  Formgepresstes Anschweißband mit Kugellager und Stift aus Messing oder Stahl

Art.	A	B	C	D	E	Perno	Peso(g)	Conf.
-	-	-	-	-	-	Pin	Weight(g)	Pack
176.1.4	149	71	22	25	7	ferro iron	430	15
176.3.4	149	71	22	25	7	ottone brass	450	15
176.2.4	101	47	22	25	7	ferro iron	282	25
176.4.4	101	47	22	25	7	ottone brass	286	25