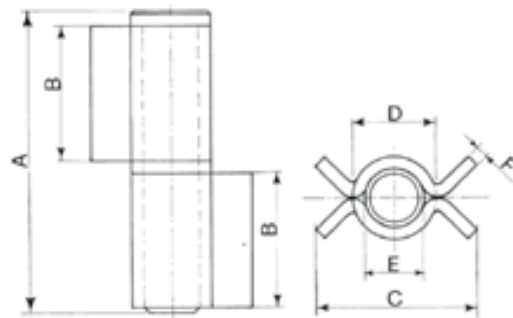


## Cerniera pesante a due ali aperte con cuscinetto (C) o rondella in ottone (R)



Materiale: Acciaio grezzo



Two opened wings heavy hinge with thrust bearing (C) or brass washer (R)

Charnière lourde à deux ailes ouvertes avec roulement (C) ou rondelle en laiton (R)

Charnela pesada abierta de dos alas con cojinete (C) o arendela latón (R)

Тяжёлая петля из двух частей со штифтом (C) и/или прокладкой "R"

Schwerlastschamier mit 2 offenen Flügeln mit Kugellager (C) oder Zwischenring aus Messing (R)



Art.	Var.	A	B	C	D	E	F	Peso(g)	Conf.
-	Variation	-	-	-	-	-	-	Weight(g)	Pack
<b>185/10.4</b>	C	105	47	56	28	20	4	590	10
<b>185/20.4</b>	C	210	98	56	28	20	4	1.180	8
<b>185/10.5</b>	R	109	47	59	28	20	4	585	10
<b>185/20.5</b>	R	210	98	56	28	20	4	1.175	8