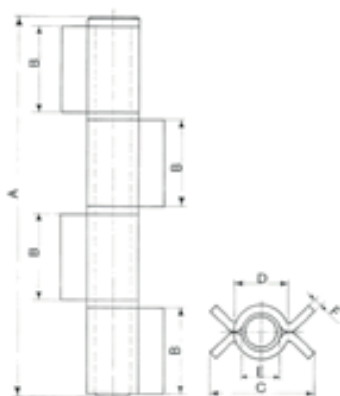








Materiale: Acciaio grezzo




 *Four opened wings heavy hinge with thrust bearing (C) or brass washer (R)*

 *Charnière lourde à quatre ailes ouvertes avec roulement (C) ou rondelle en laiton (R)*

 *Charnela pesada abierta de cuatro alas con cojinete (C) o arendela latón (R)*

 *Тяжёлая петля из четырёх частей со штифтом (C) и/или прокладкой "R"*

 *Schwerlastschamier mit 4 offenen Flügeln mit Kugellager (C) oder Zwischenring aus Messing (R)*



Art.	Var.	A	B	C	D	E	F	Peso(g)	Conf.
-	Variation	-	-	-	-	-	-	Weight(g)	Pack
<b>187/20.4</b>	C	210	47	56	28	20	4	1.165	8
<b>187/20.5</b>	R	210	47	56	28	20	4	1.160	8