

WHAT'S NEW

Art. 876/12
Art. 876/16
Art. 876/18
Art. 876/20
Art. 876/22
Art. 876/24



PRATICO®
Pintle

Art. 920.12
Art. 920.16
Art. 920.18
Art. 920.20
Art. 920.22
Art. 920.24



Bushig for
PRATICO®

Art. 921.12
Art. 921.16
Art. 921.18
Art. 921.20
Art. 921.22
Art. 921.24



Plate to be welded
PRATICO®

Art. 922.12
Art. 922.16
Art. 922.18
Art. 922.20
Art. 922.22
Art. 922.24



Plate to bedowelled
PRATICO®

Art. 923.18
Art. 923.22



Tube for
walling for
PRATICO®

Art. 924.12
Art. 924.16
Art. 924.18
Art. 924.20
Art. 924.22
Art. 924.24



Plate for 180°
opening for
PRATICO®

Art. 253



Adjustable chain
with ANTI-FALL
plate to be welded
or screwed.

Our brands:



ARTIK

Kassel

NOVAGUIDE

Authorised dealer:



10070 Grosso (TO) - Località Vauda 12
Tel. 0039 011 92 68 262 - Fax 0039 011 92 60 009
Mail: info@novaferr.com - www.novaferr.com

Copyright by Nova-Ferr srl - All right reserved

PINTLE RANGE PATENTED



NF Pratico

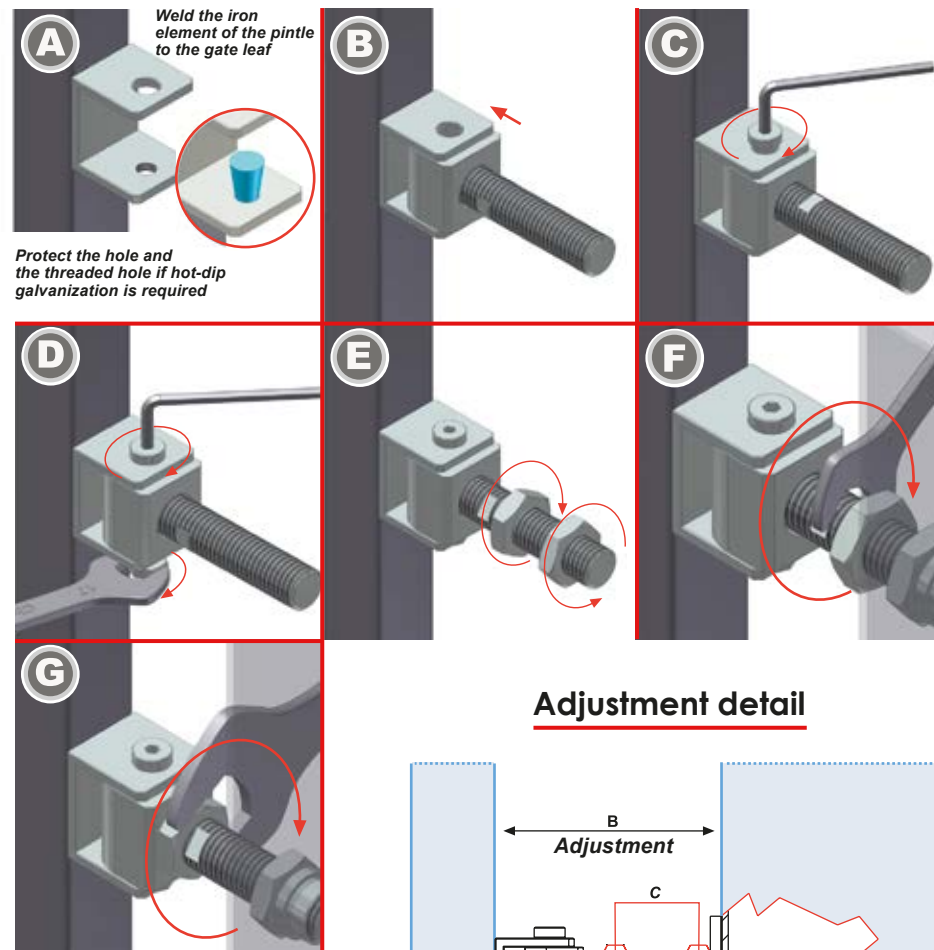
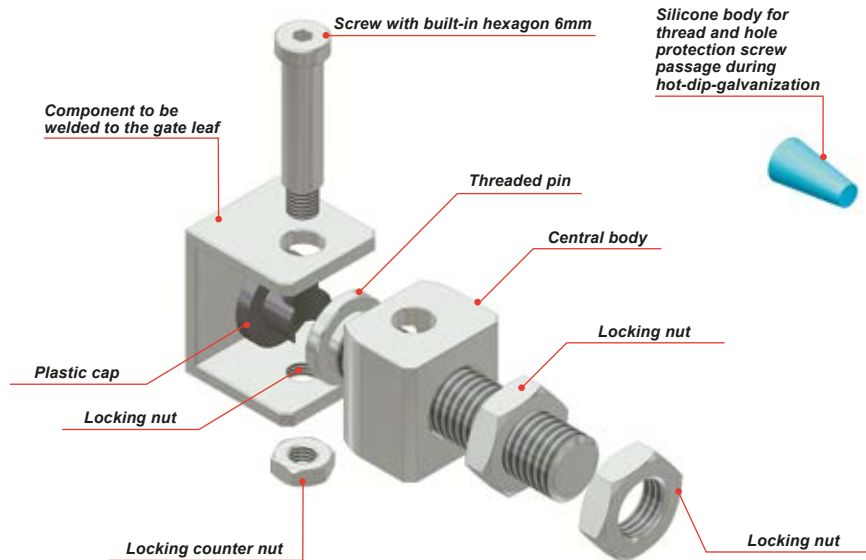
5

5 GOOD REASONS TO CHOOSE OUR NEW PINTLE

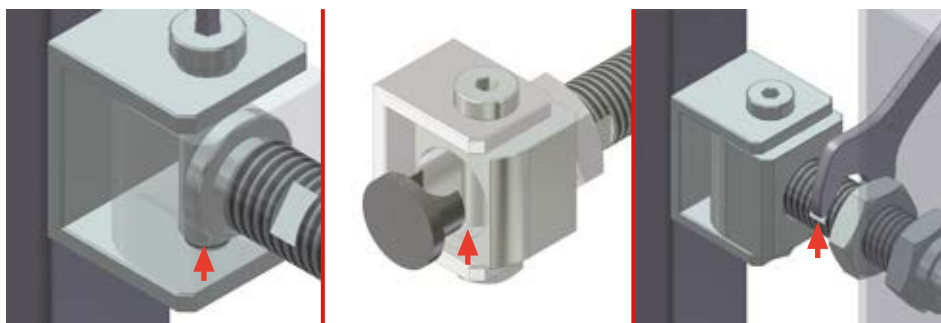
- Exceptional strength and endurance
- New recording device
- Quick assembly
- Innovative design
- Made in Italy Quality

NF Pratico

Pintle composition



Quick and easy adjustment **PATENTED**



Advantages compared to traditional pintle

- 1 During assembly, the end part of the pin hits the internal surface of the wing to guarantee safe locking.
- 2 Seat suitable for lubrication grease collection.
- 3 Once the hexagonal nut has been loosened thanks to the impression made on the threaded pin, adjustment is much more practical and functional. Adjustment is easy in any situation.

Art.	B	C	D
M12	65-90	CH19	CH10
M16	75-95	CH24	CH14
M18	79-123	CH27	CH15
M20	79-122	CH30	CH17
M22	85-124	CH32	CH18
M24	88-120	CH36	CH20

