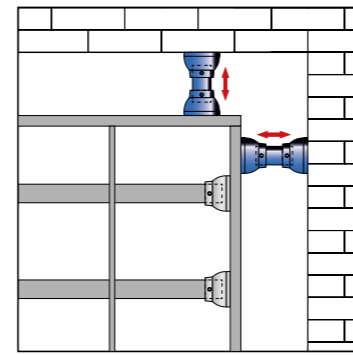
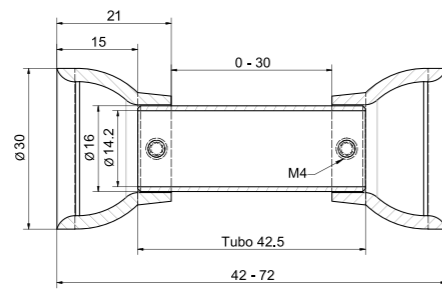


Compensatore grate per tondo ø14

Art. 340



🇬🇧 Adjustable spacer for grilles, suitable for round bar ø14.2 mm. Galvanized steel.

🇫🇷 Distancier réglable pour grilles, adapté à barre ronde ø14.2 mm. Acier zingué.

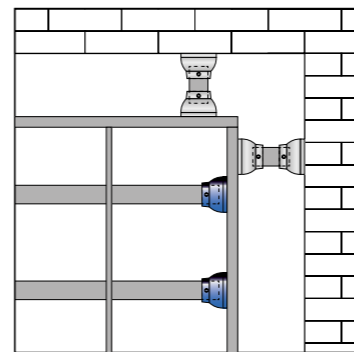
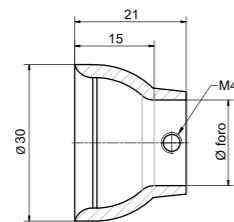
🇪🇸 Distanciador ajustable para rejillas, apto para barra redonda ø14.2 mm. Acero cincado.

🇩🇪 Verstellbarer Abstandshalter für Gitter, geeignet für Rundstab ø14.2 mm. Verzinkter Stahl.

Art.	ø foro	Regolazione	Materiale	Peso(g)	Conf.	€/pz
340	14.2 mm	42-72 mm	Acciaio zincato	71.98	250	2,94

Ornamento copri saldatura per grate

Art. 340/2 - 340/3



🇬🇧 Decorative crossbar end cap for grilles. Galvanized steel.

🇫🇷 Bouchon d'extrémité décoratif pour grilles. Acier zingué.

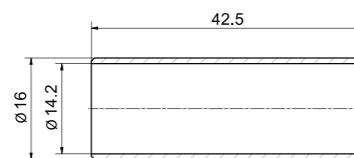
🇪🇸 Tapa terminal decorativa para rejillas. Acero cincado.

🇩🇪 Dekorative Schweißabdeckung für Gitter. Verzinkter Stahl.

Art.	ø foro	Materiale	Peso (g)	Conf.	€/pz
340/2	14.2 mm	Acciaio zincato	28.93	500	1,12
340/3	16.2 mm	Acciaio zincato	28.87	500	1,12

Tubo per compensatore

Art. 340/T



🇬🇧 Pipe for adjustable spacer. Galvanized steel.

🇫🇷 Tuyau pour distancier réglable. Acier zingué.

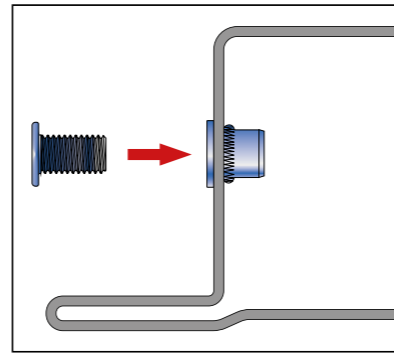
🇪🇸 Tubo para distanciador ajustable. Acero cincado.

🇩🇪 Rohr für Verstellbarer Abstandshalter. Verzinkter Stahl.

Art.	ø foro	Materiale	Peso (g)	Conf.	€/pz
340/T	14.2 mm	Acciaio zincato	14.15	500	0,70

Compensatori e copri saldatura per serramenti

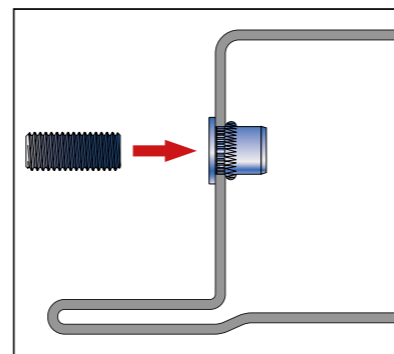
Compensatore regolabile M12 per infissi, inserto ø15 + vite cava Art. 331/1



- 🇬🇧 Adjustable M12 spacer for window frames, ø15 rivet + socket screw. Galvanized steel.
- 🇫🇷 Distancier réglable M12 pour portes et fenêtres, insert ø15 + vis creux. Acier zingué.
- 🇪🇸 Distanciadador ajustable M12 para marcos, inserto ø15 + tornillo hueco con cabeza. Acero cincado.
- 🇩🇪 Verstellbarer Abstandhalterset für Fenster mit Gewindebüchse ø15, M12. Verzinkter Stahl.

Art.	Inserto	Vite	Peso (g)	Conf.	€/pz
331/1	Acciaio zincato	Acciaio zincato	29.88	200	1.18

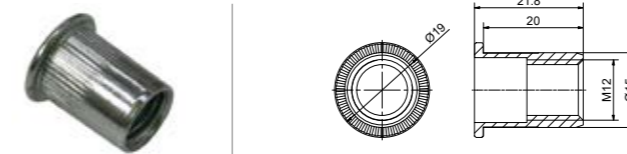
Compensatore regolabile M12 per infissi, inserto ø15 + grano cavo Art. 331/2 - 331/3 - 331/4



- 🇬🇧 Adjustable M12 spacer for window frames, ø15 galvanized steel rivet + aluminium socket grub.
- 🇫🇷 Distancier réglable M12 pour luminaires, insert ø15 en acier zingué + vis sans tête en aluminium.
- 🇪🇸 Distanciadador ajustable M12 para marcos, inserto ø15 en acero cincado + tornillo hueco sin cabeza en aluminio.
- 🇩🇪 Verstellbarer Abstandhalterset für Fenster mit Gewindestift ø15, M12. Verzinkter Stahl und Aluminium.

Art.	Inserto	Grano	L grano (mm)	Peso (g)	Conf.	€/pz
331/2	Acciaio zincato	Alluminio	20	17.30	200	0.96
331/3	Acciaio zincato	Alluminio	30	19.51	200	1.04
331/4	Acciaio zincato	Alluminio	40	21.72	200	1.32

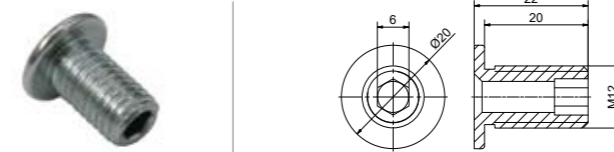
Inserto ø15 per compensatore regolabile M12 Art. 331/IN



- 🇬🇧 ø15 rivet for adjustable M12 spacer for window frames. Galvanized steel.
- 🇫🇷 Insert ø15 pour distancier réglable M12 pour portes et fenêtres. Acier zingué.
- 🇪🇸 Inserto ø15 para distanciadador ajustable M12 para marcos. Acero cincado.
- 🇩🇪 Gewindebuchse für verstellbarer Abstandhalter M12 für Fenster. Verzinkter Stahl.

Art.	Materiale	Peso (g)	Conf.	€/pz
331/IN	Acciaio zincato	13.00	200	0.54

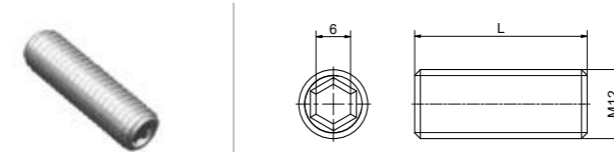
Vite cava per compensatore regolabile M12 Art. 331/VT



- 🇬🇧 Socket screw for adjustable M12 spacer for window frames. Galvanized steel.
- 🇫🇷 Vis creux pour distancier réglable M12 pour portes et fenêtres. Acier zingué.
- 🇪🇸 Tornillo hueco con cabeza para distanciadador ajustable M12 para marcos. Acero cincado.
- 🇩🇪 Gewindeschraube für verstellbarer Abstandhalter M12 für Fenster. Verzinkter Stahl

Art.	Materiale	Peso (g)	Conf.	€/pz
331/VT	Acciaio zincato	16.88	200	0.64

Grano cavo per compensatore regolabile M12 Art. 331/G20 - 331/G30 - 331/G40



- 🇬🇧 Socket grub for adjustable M12 spacer for window frames. Aluminium.
- 🇫🇷 Vis sans tête pour distancier réglable M12 pour portes et fenêtres. Aluminium.
- 🇪🇸 Tornillo hueco sin cabeza para distanciadador ajustable M12 para marcos. Aluminio.
- 🇩🇪 Gewindestift für verstellbarer Abstandhalter M12 für Fenster. Aluminium.

Art.	Materiale	L (mm)	Peso (g)	Conf.	€/pz
331/G20	Alluminio	20	4.30	200	0.42
331/G30	Alluminio	30	6.51	200	0.50
331/G40	Alluminio	40	8.72	200	0.79